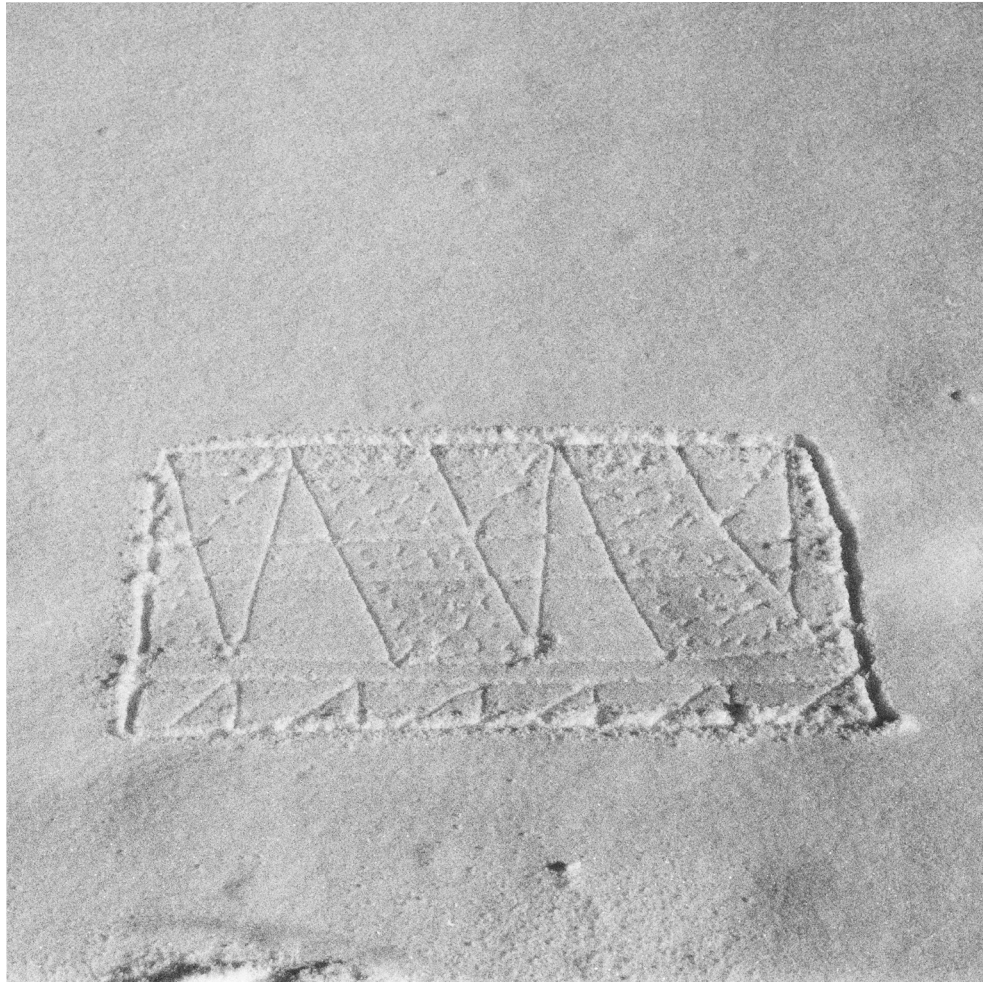
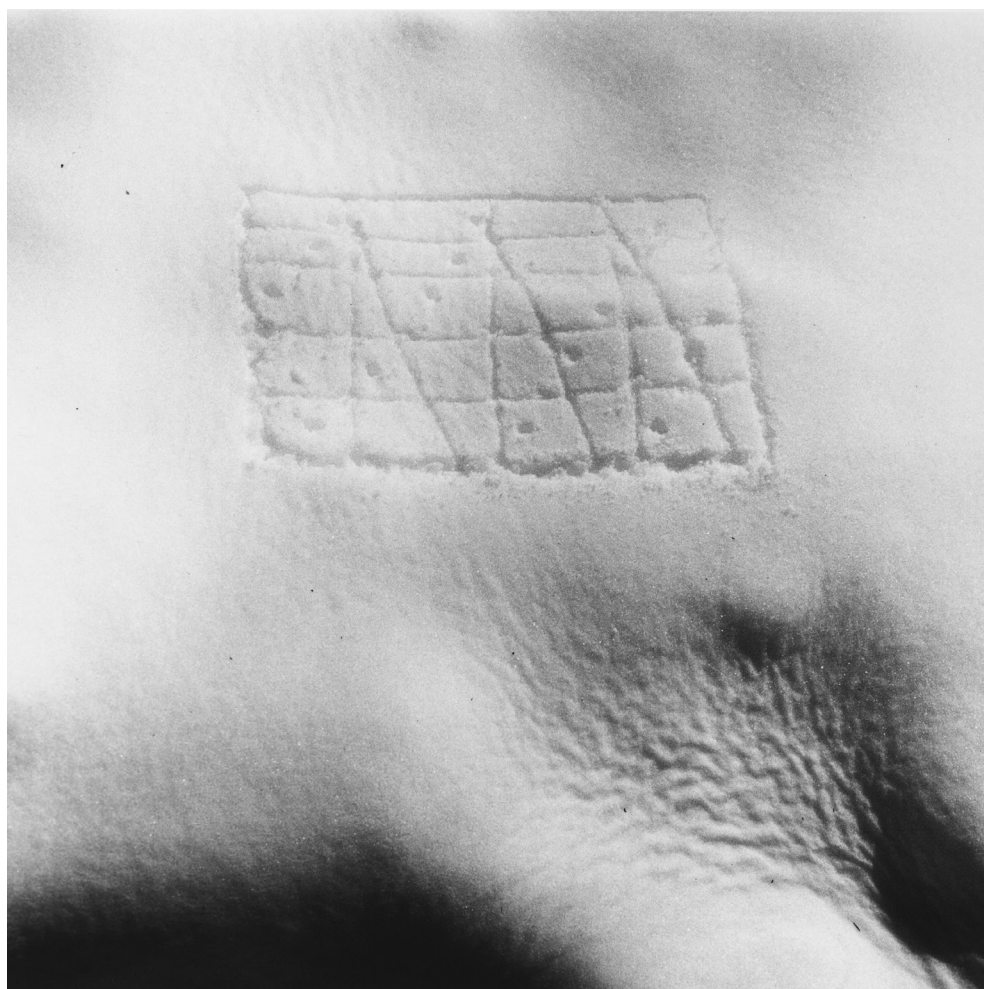


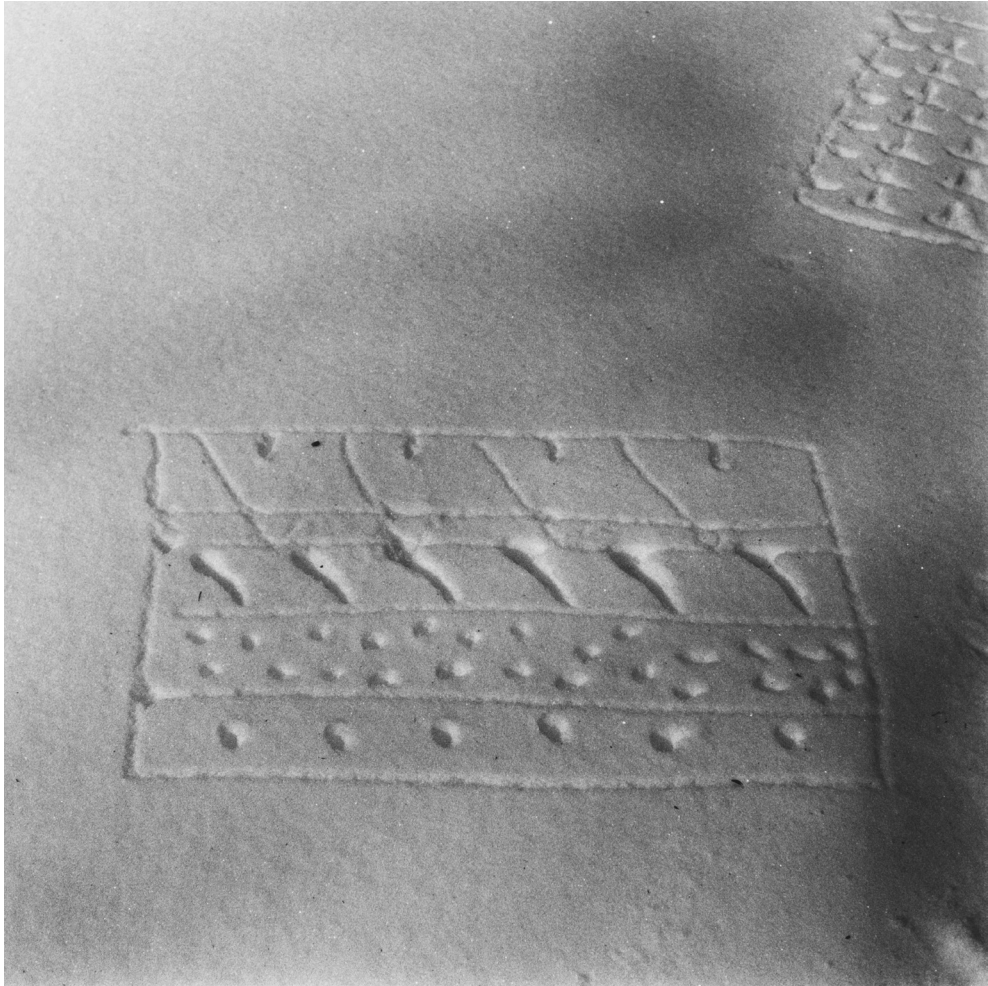
IMPRINTS

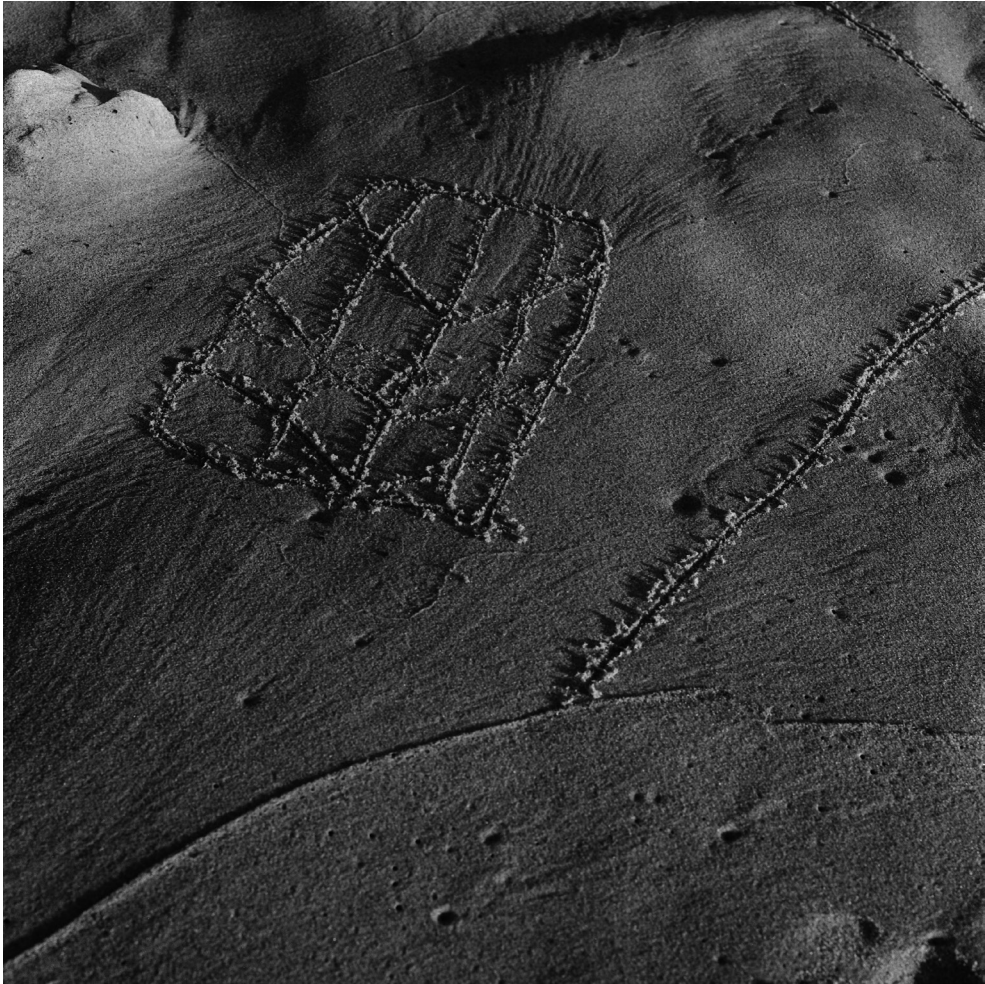
Ben K. Voss
Midge Wattles

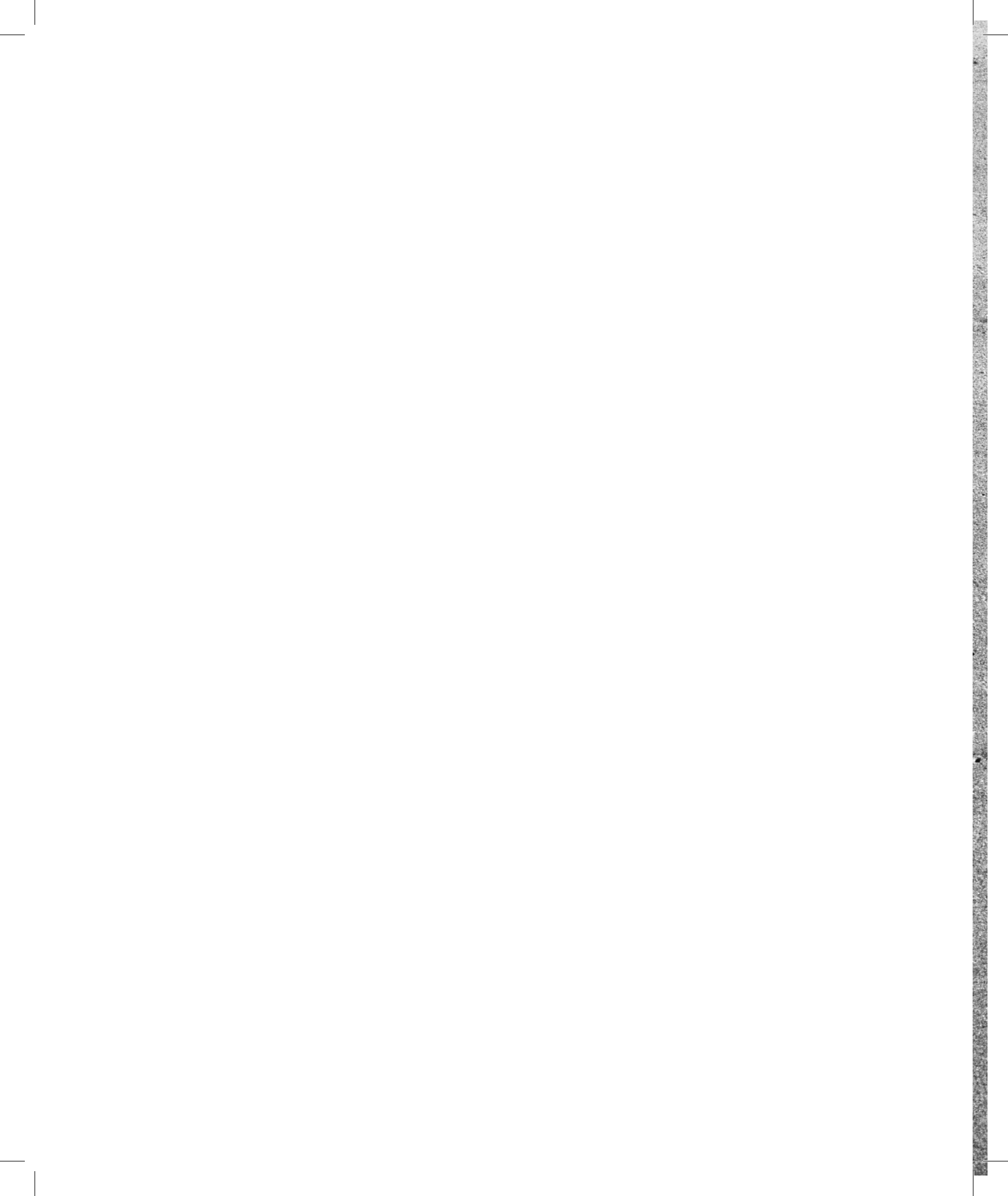




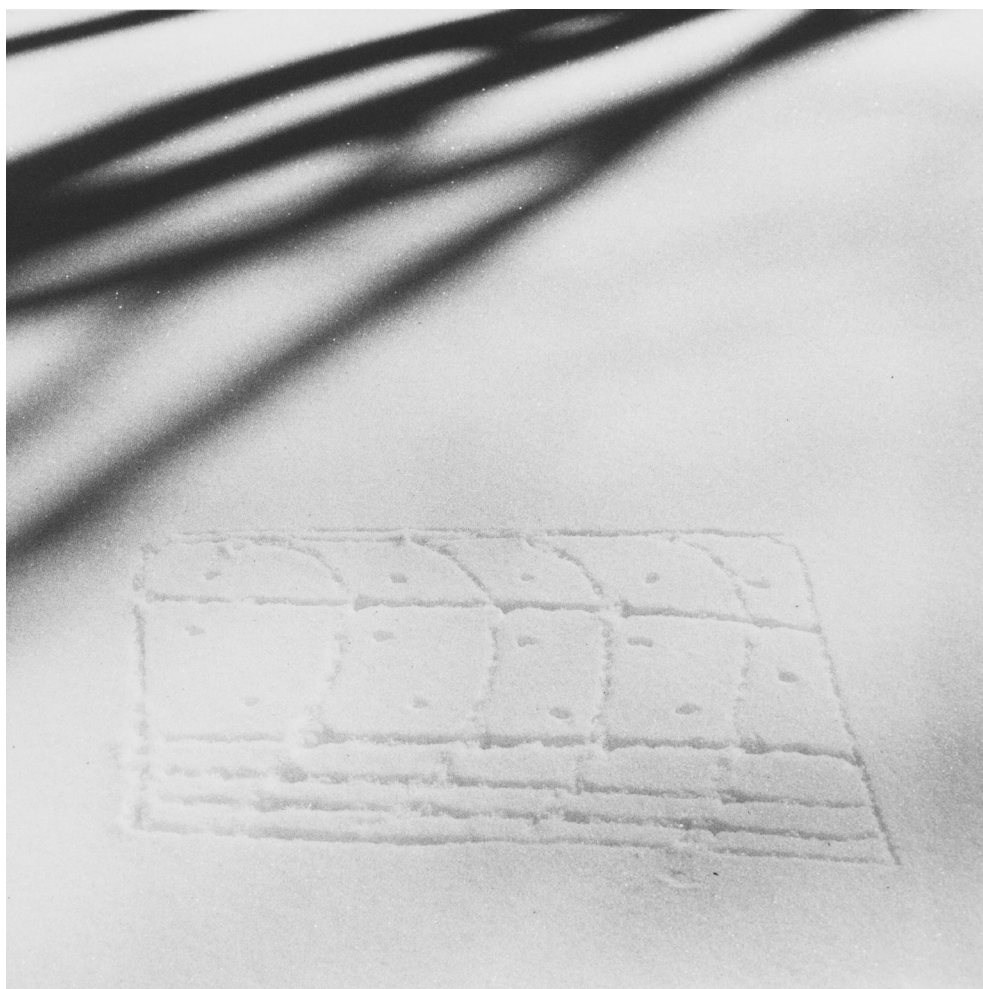


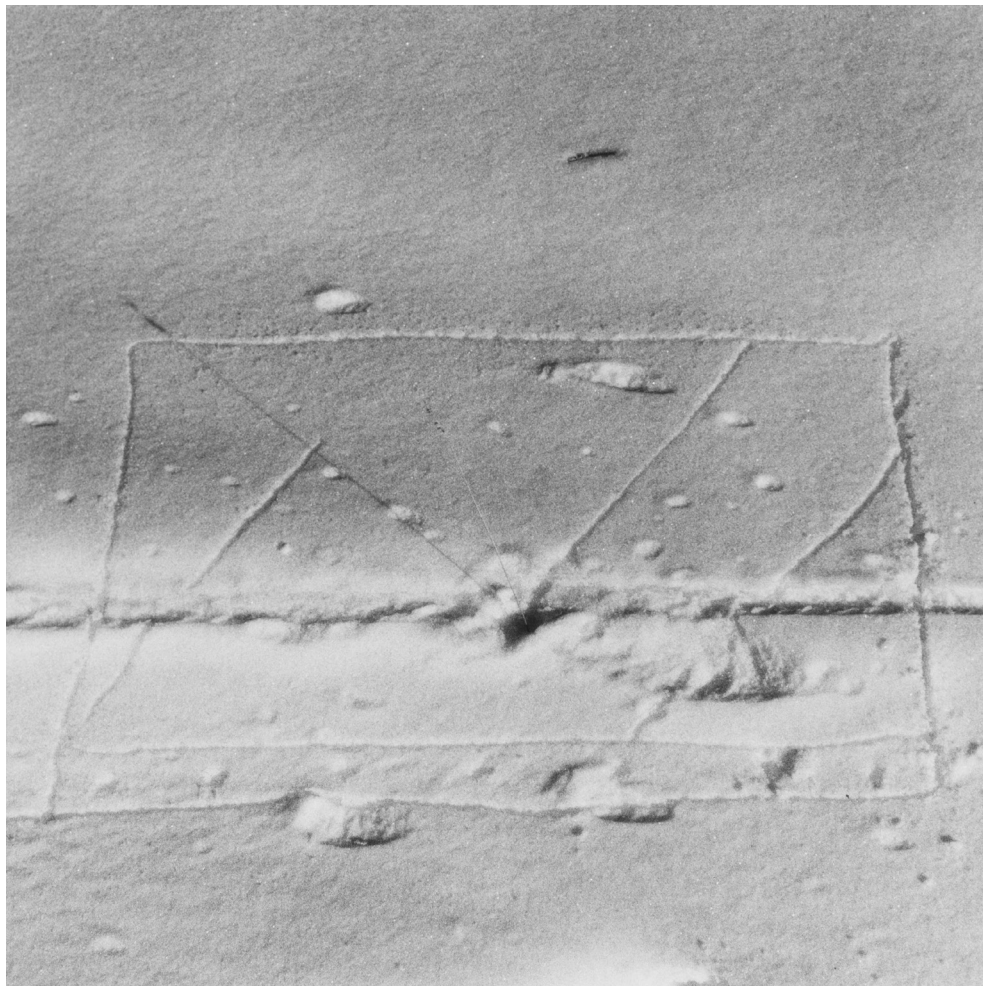


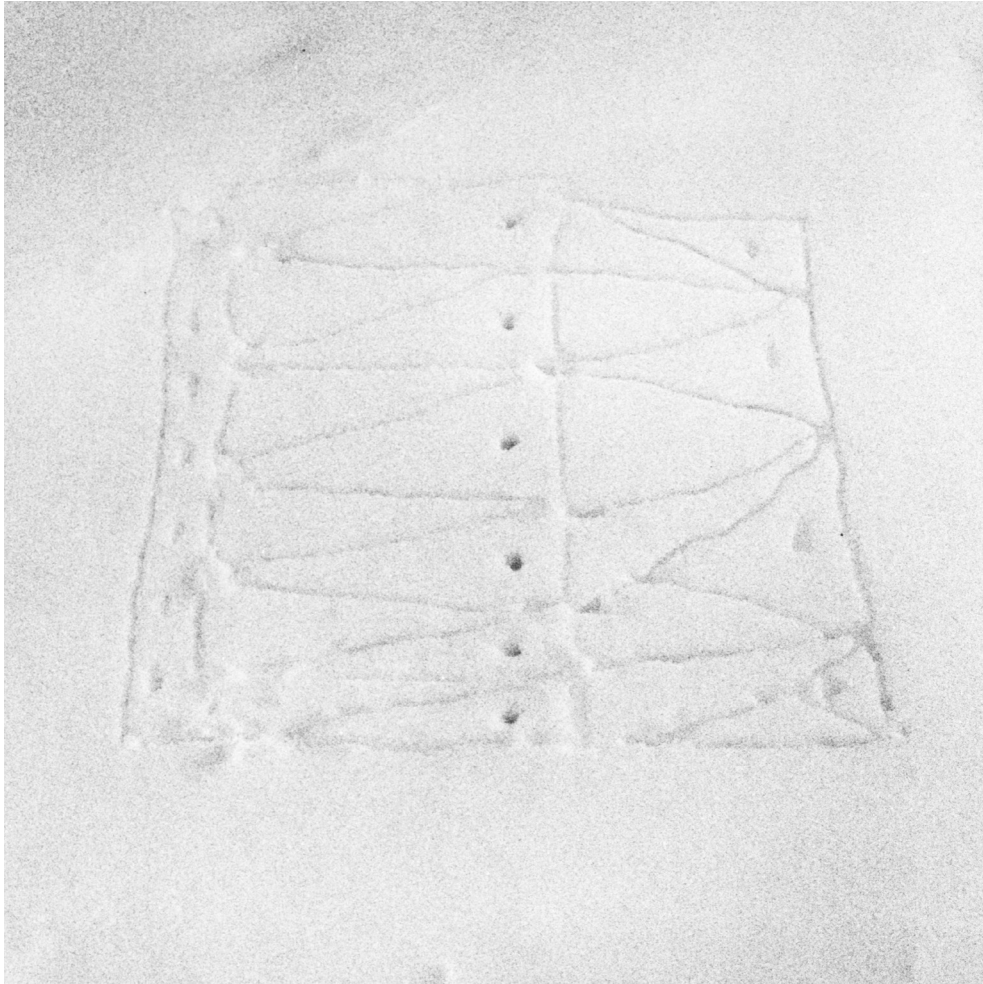


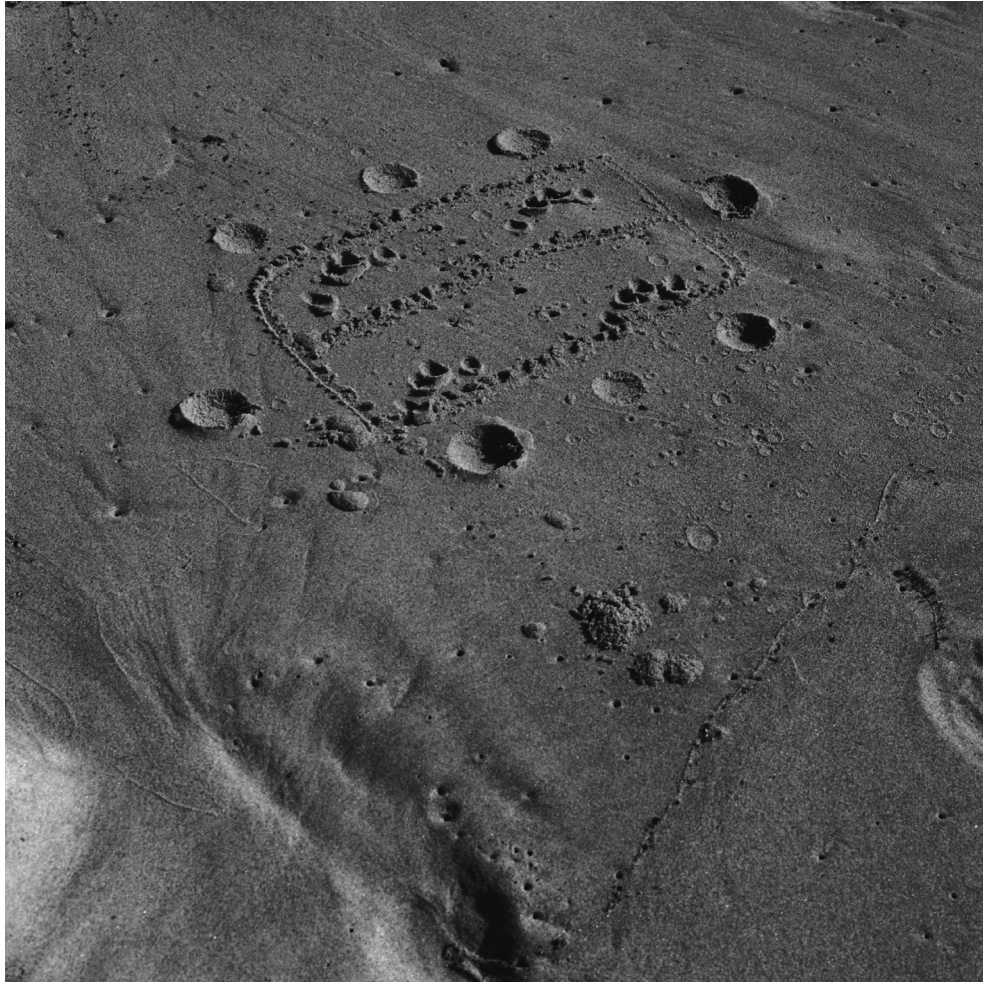






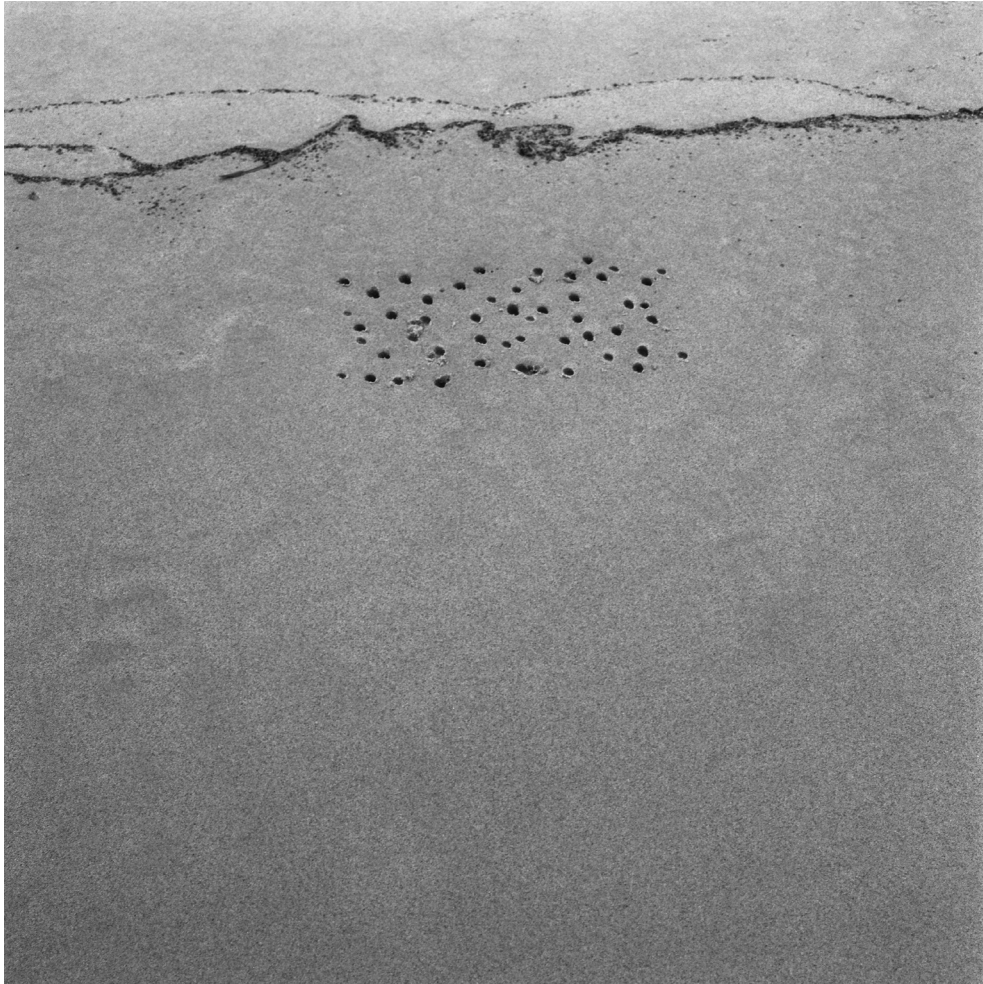






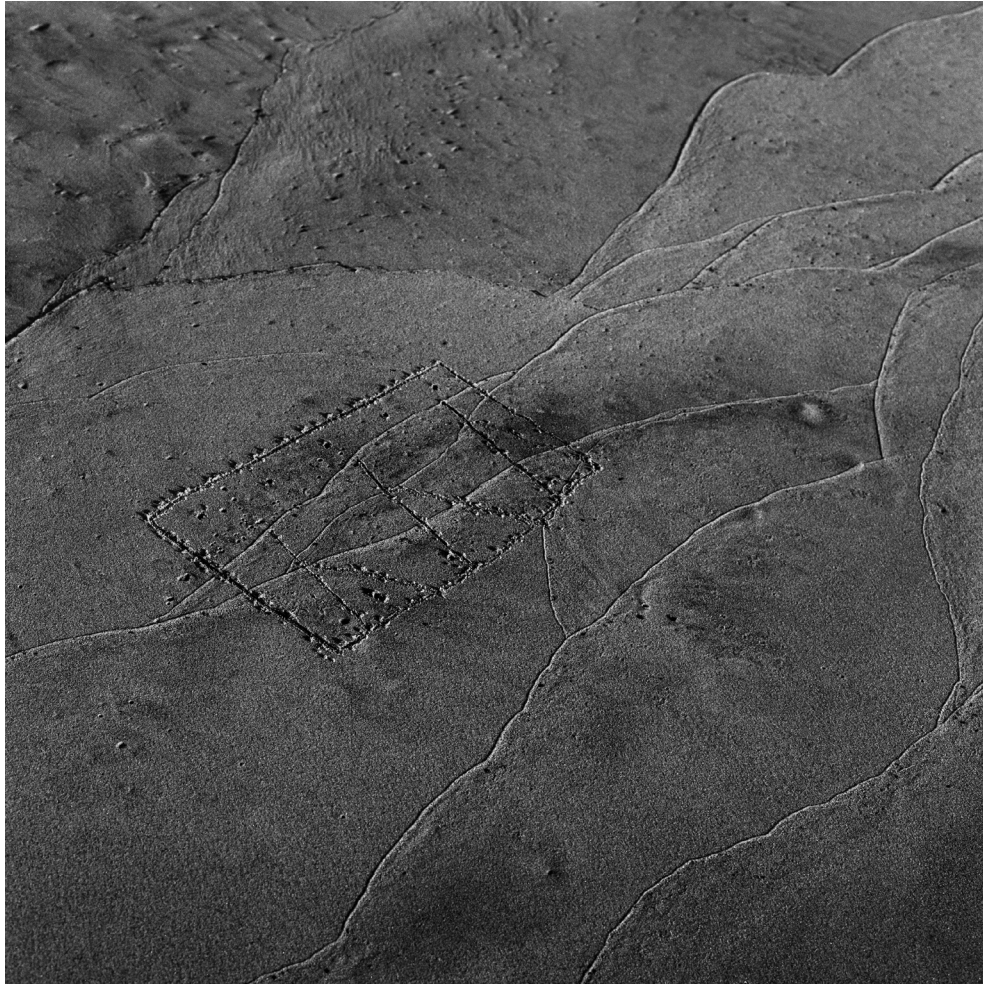


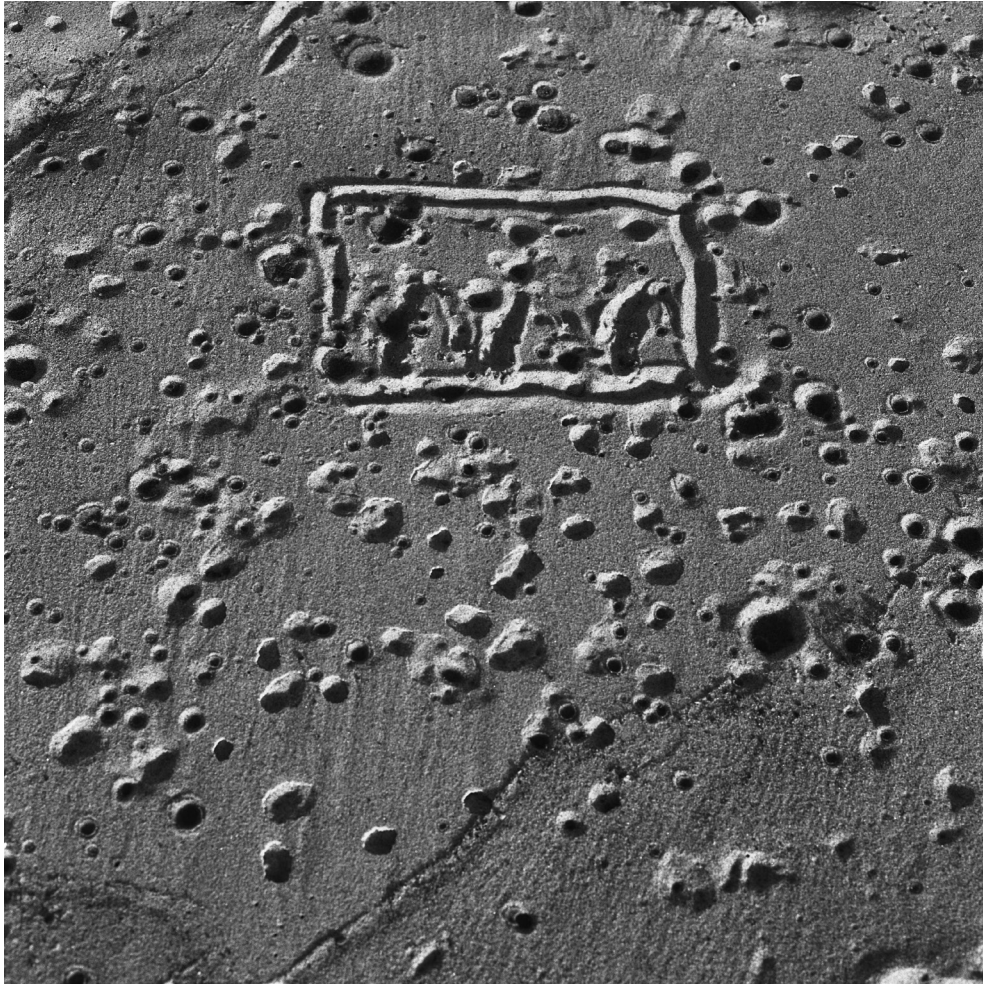








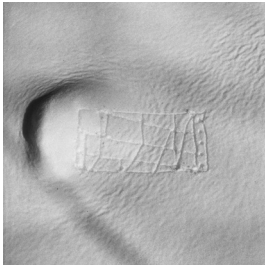




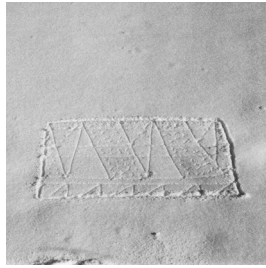
Imprints is a series of silver gelatin photographs created in collaboration between artists Ben K. Voss and Midge Wattles. The photographs made by Wattles depict drawings in snow and in sand made by Voss. The series began in the winter of 2018 during a residency outside of Aspen, Colorado, and has continued in the following summers along the shores of Lake Michigan. The ongoing series is comprised of 20 photographs, each an edition of 5.

The imagery suggests a wide range of subjects such as the naturalistic, the other-worldly, the scarring of the body and land, ancient scripts, and maps. Voss's drawings are made intuitively with his hands, body, and materials he finds on site such as sticks, stones, shells, and water. Wattles approaches the drawings much like an explorer or archaeologist, discovering the drawings in an ever-changing uncontrollable environment. Using the traditional darkroom process, Wattles prints the work using a variety of tones that obscure the viewer's perception as she imagines each photograph as a unique terrain.

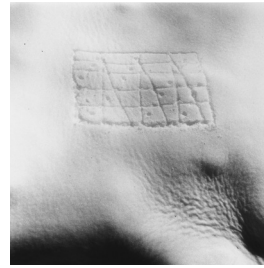
Their collaboration explores the relationship between the inner vision of the drawings and the physical world they inhabit as photographs. The work blurs the lines between expression and documentation, landscape and still life, and the mediums of photography and drawing. These dichotomies display a dialogue not only between the artists, but also a conversation with the planet itself. The earth is, in a sense, the third collaborator.



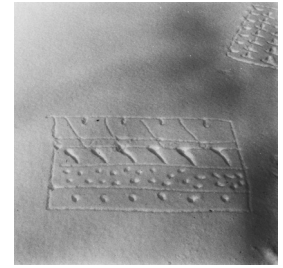
Imprint I (01)



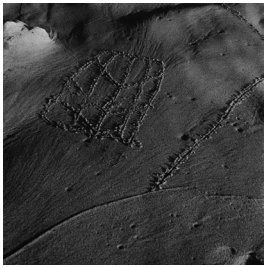
Imprint III (03)



Imprint V (05)



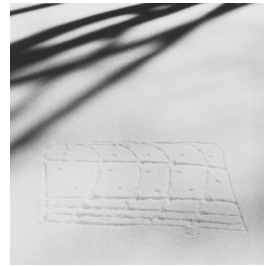
Imprint VII (07)



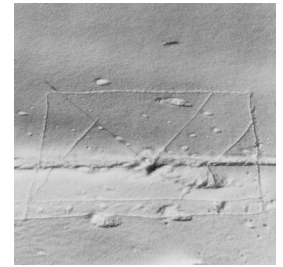
Imprint XXIII (23)



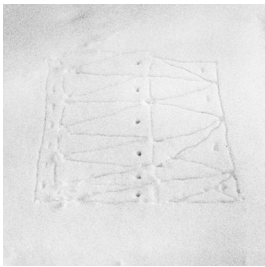
Imprint XXIX (29)



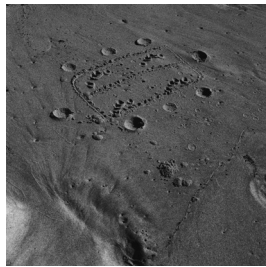
Imprint X (10)



Imprint XI (11)



Imprint XII (12)



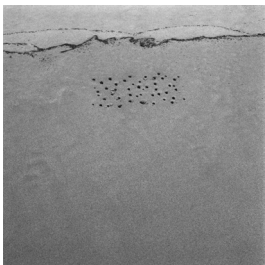
Imprint XXIV (24)



Imprint XXI (21)



Imprint XXV (25)



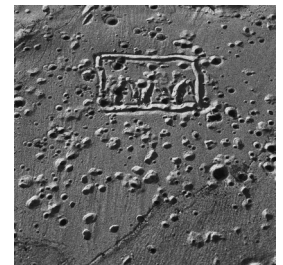
Imprint XXVI (26)



Imprint XXVIII (28)



Imprint XXVII (27)



Imprint XXII (22)

IMPRINTS

First edition of 100
Published in 2020 by Chateau International, London

978-1-8380450-2-9

© 2020 Ben K. Voss and Midge Wattles for all artworks
© 2020 Chateau International for this edition

Printed at PageMasters and London Centre for Book Arts

